

Northern Textile collection Contract 2022



Page	Textile type	Price group
3	Reflect	0
4	Brusvik	1
5	Remix 3	2
6	Atlas	2
7	Steelcut Trio 3	3
8	Fiord 2	3
9	Canvas 2	3
10	Vidar 3	4
11	Moss	4
12	Zero	4

Reflect by Kvadrat

Reflect is a sophisticated twill weave upholstery textile designed by Patricia Urquiola made from recycled polyester, with a natural expression and a particularly tactile touch.

Unusual for a textile crafted from recycled fibres, Reflect has a particularly delicate and soft hand. Made from recycled polyester, it offers excellent functional performance, as well as a full scale of vibrant colours.

The versatile palette for Reflect comprises 35 colourways and expresses confident colour combinations by matching warm notes with closely related nuances. Reflect is suitable for contract and private use.

Design: Patricia Urquiola

Composition: 100% post-consumer recycled polyester

Yarn type: Filament

Binding: Twill

Width: 140 cm

Weight: App. 430 g/lin.m

Durability: 100,000 Martindale

Pilling: Note 4, (EN ISO 12945)

Lightfastness: Note 6-7 (ISO 105-B02)

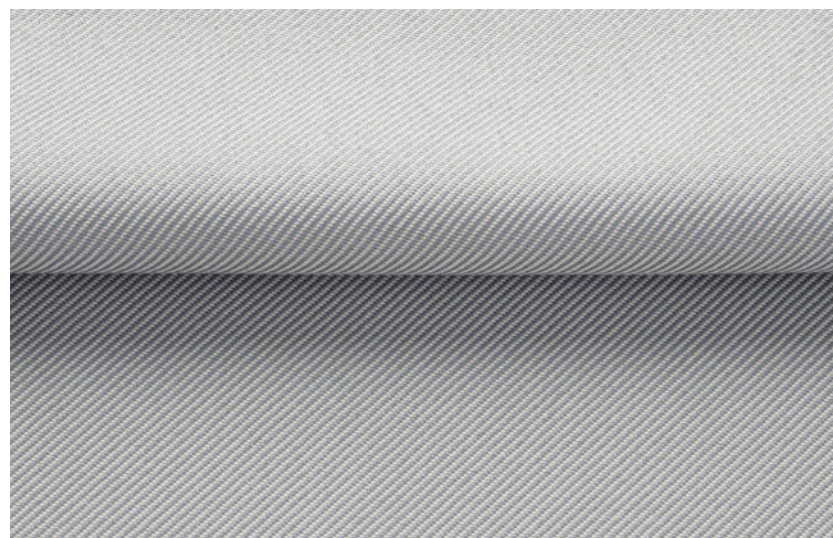
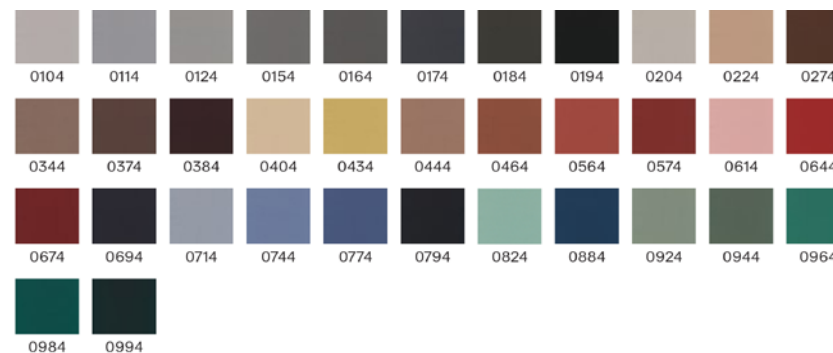
Warranty: 10 years

Produced in: Holland

Sustainability: Recyclable, Greenguard Gold, HPD, EPD

Price group: 0

More info: kvadrat.dk/en/products/upholstery/7798-reflect



Brusvik by Kvadrat

Crafted by Innvik in Norway, Brusvik is a classic and timeless fabric made of sustainable wool. The contrasting nuances within each color creates a dynamic play when applied to our furniture. Brusvik is a good choice for both private and public spaces.

Design: Tone Barnung

Composition: 92 % new wool, 8% polyamid

Width: 140 cm

Weight: App. 520 g/lin.m

Durability: 100,000 Martindale

Pilling: 3-4

Lightfastness: 5-7

Produced in: Norway

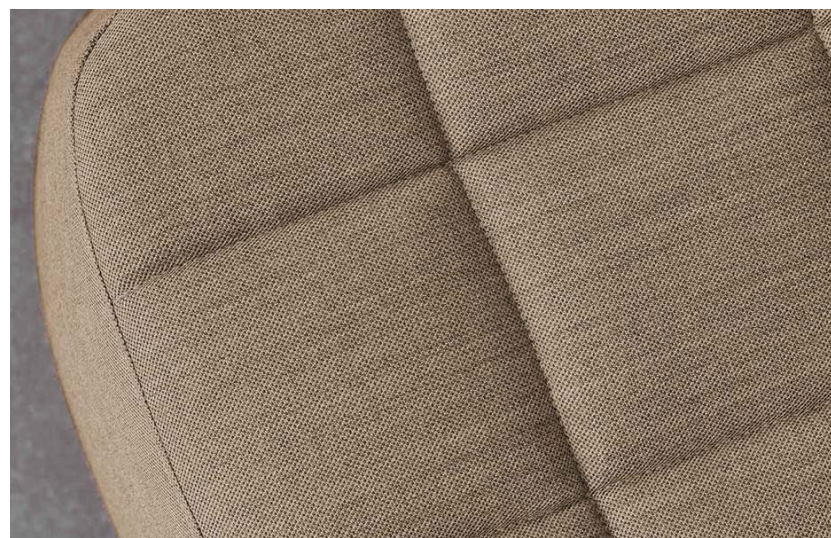
Sustainability: Recyclable, Greenguard Gold, HPD, EPD

Price group: 1

More info: innvik.no/menu-kolleksjon/brusvik



* MOQ required



Remix 3 by Kvadrat

Remix 3 is an elegant upholstery textile distinguished by exceptional depth of colour available in 72 sophisticated colours.

Remix 3 looks unicoloured from a distance but reveals subtle details and colour contrasts when viewed close-up. The textile features a tight, minimalistic weave, and derives its lively colour play from a combination of two different mélange yarns, which each combine up to three hues.

Design: Giulio Ridolfo

Composition: 90% new wool worsted, 10% nylon

Yarn type: Worsted

Binding: Plain

Width: 140 cm

Weight: 420 g/lin.m

Durability: 100,000 Martindale (EN ISO 12947)

Pilling: Note 4 (EN ISO 12945)

LightFastness: Note 6-7 (ISO 105-B02)

Warranty: 10 years

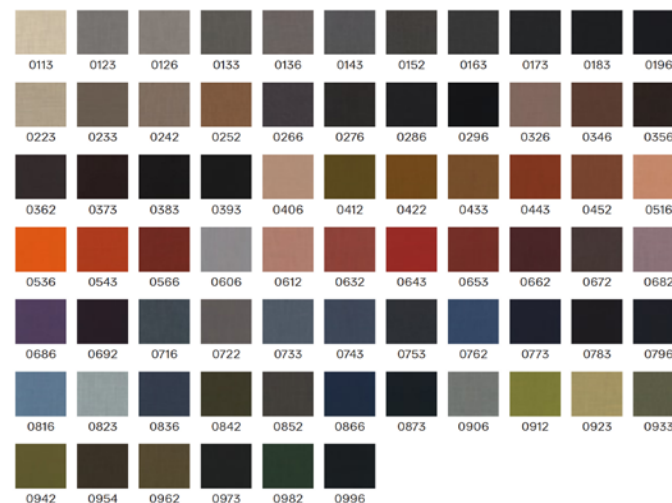
Produced in: UK

Sustainability: EU Ecolabel, Greenguard Gold, HPD, EPD

Price group: 2

More info:

kvadrat.dk/en/products/upholstery/2968-remix-3



Atlas by Kvadrat

Woollen upholstery textile Atlas particularly stands out for its new mélangé expression and meticulously nuanced colour blends.

Atlas was created to deliver a pioneering mélangé look and designer Margrethe Odgaard has achieved this with a construction that unites two different coloured yarns – each of which combines two colours.

With Atlas, unlike other mélangés, the colours are not blended in the fibres. Instead they are expressed, pattern-like, through the structure of the material.

Design: Margrethe Odgaard

Composition: 90% new wool worsted, 10% nylon

Yarn type: Worsted

Binding: Plain

Width: 140 cm

Weight: App. 400 g/lin.m

Durability: 100,000 Martindale (EN ISO 12947)

Pilling: Note 4-5 (EN ISO 12945)

Lightfastness: Note 6-7 (ISO 105-B02)

Warranty: 10 years

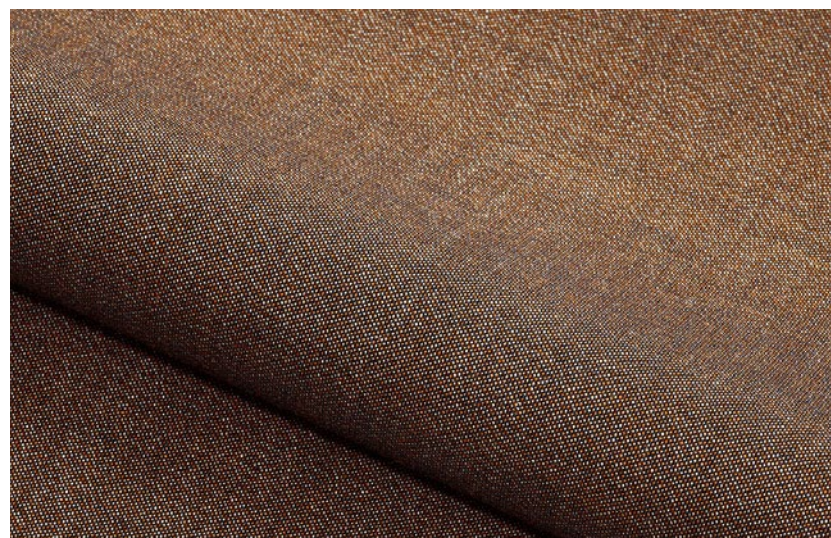
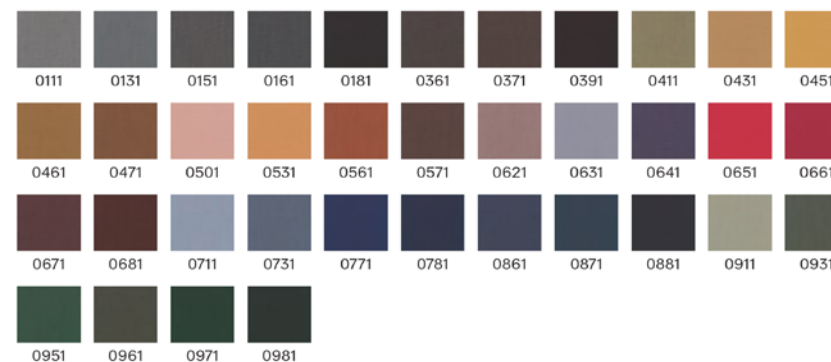
Produced in: UK

Sustainability: EU Ecolabel, Greenguard Gold, HPD, EPD

Price group: 2

More info:

kvadrat.dk/en/products/upholstery/1310-atlas



Steelcut Trio 3 by Kvadrat

Steelcut Trio is a hardwearing woollen upholstery textile with the same construction as Steelcut. Originally designed by Frans Dijkmeijer, it comes in updated colourways crafted by Giulio Ridolfo.

The three-dimensional surface of Steelcut Trio resembles small pyramids or steel points. Despite the complexity of the textile's innovative weave, it has a simple, precise expression. Steelcut Trio is yarn-dyed and made from 3 differently coloured yarns.

Design: Frans Dijkmeijer / Giulio Ridolfo

Composition: 90% new wool, 10% nylon

Yarn type: Stapel, worsted

Binding: Semi-plain

Width: 140 cm

Weight: app. 770 g/lin.m

Durability: 100,000 Martindale

Pilling: 4 (ISO 1-5)

LightFastness: Note 6-7 (ISO 105-B02)

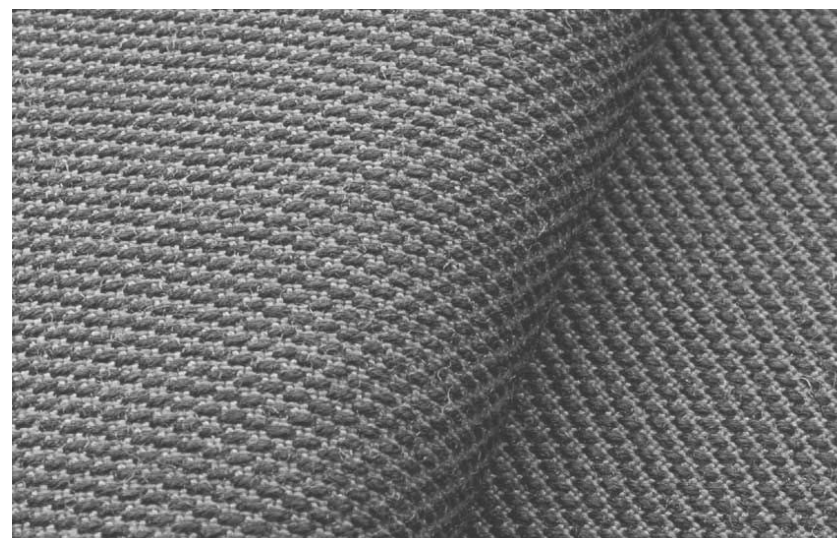
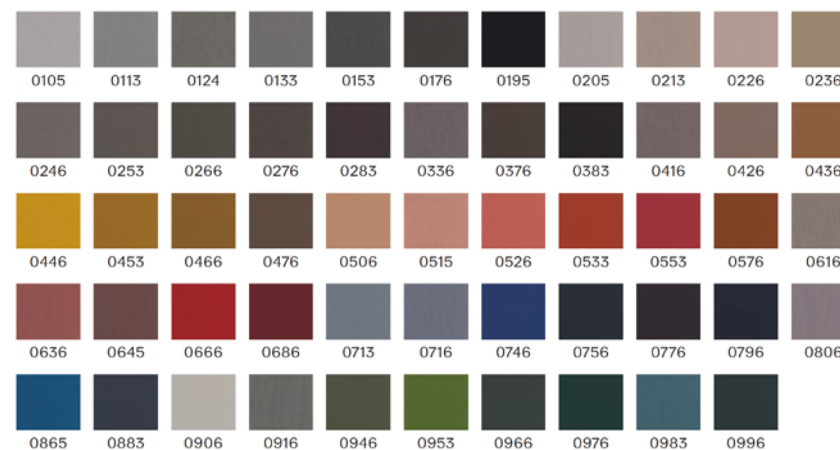
Warranty: 10 years

Produced in: United Kingdom

Sustainability: EU Ecolabel, Greenguard Gold, HPD, EPD

Price group: 3

More info: kvadrat.dk/en/products/upholstery/2965-steelcut-trio-3



Fiord 2 by Kvadrat

Fiord is a versatile woollen upholstery textile with a subtle three-dimensional look. Originally designed by Norwegian designer Tone Barnung, it comes in refreshed colours created in collaboration with Louise Sigvardt.

The construction of Fiord combines a mélangé yarn with a unicoloured yarn that creates pearl-like dots that play across the textile's surface. This sophisticated expression reflects a key source of inspiration behind the design: moonlight glittering like pearls on the rippling waters of a Norwegian fjord.

Design: Tone Barnung / Louise Sigvardt

Composition: 92% new wool worsted, 8% nylon

Yarn type: Worsted

Binding: Dobby

Width: 140 cm

Weight: 493 g/lin.m

Durability: 60,000 Martindale (EN ISO 12947)

Pilling: 4-5 (EN ISO 12945)

Lightfastness: Note 5-7 (ISO 105-B02)

Warranty: 10 years

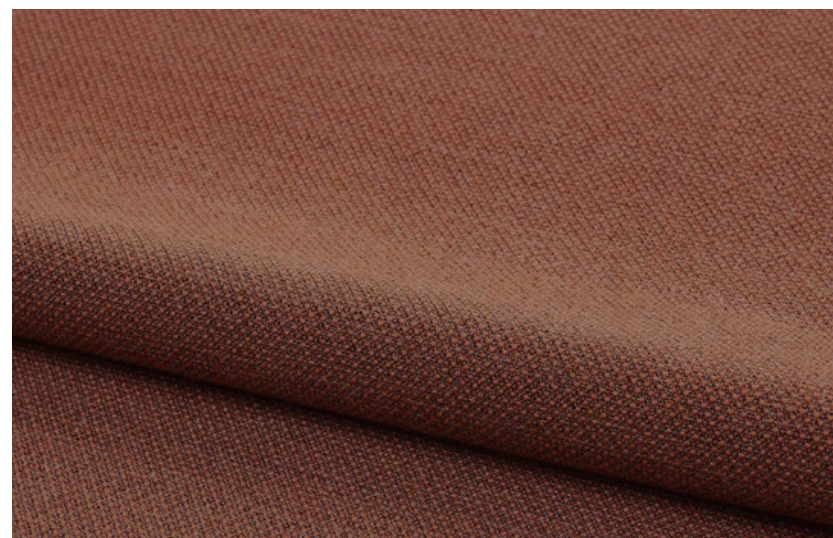
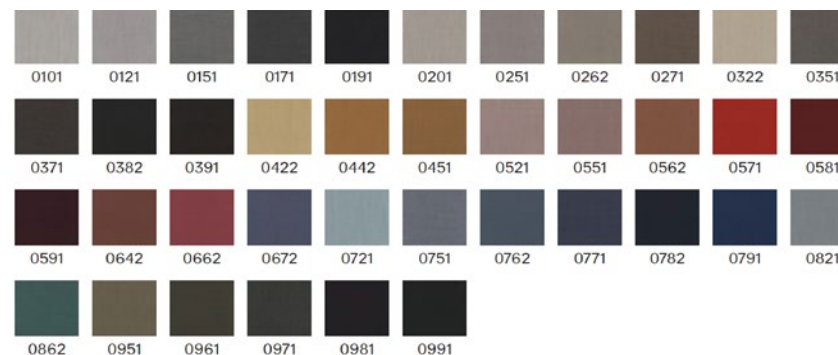
Produced in: Norway

Sustainability: EU Ecolabel, Greenguard Gold, HPD, EPD

Price group: 3

More info:

kvadrat.dk/en/products/upholstery/1279-fiord-2



Canvas 2 by Kvadrat

Canvas is a vibrant woollen upholstery textile created by Giulio Ridolfo. Particularly well-suited to large surfaces thanks to its pronounced structure, it features a soft weave and an expanded palette inspired by the landscapes of Skagen, Denmark.

The melange yarn used to craft Canvas combines three colours, with six hues in every colourway. The textile offers exceptional colour richness and an intriguing expression. From a distance, it has the calm surface of a unicoloured textile. But, get closer, and shimmering colour nuances, delicate contrasts and an elegant structure emerge.

Design: Giulio Ridolfo

Composition: 90% new wool worsted, 10% nylon

Yarn type: Worsted

Binding: Semi-plain weave

Width: 140 cm

Weight: 480 g/lin.m

Durability: 100,000 Martindale (EN ISO 12947)

Pilling: Note 4-5 (EN ISO 12945)

Lightfastness: Note 5-7 (ISO 105-B02)

Warranty: 10 years

Produced in: UK

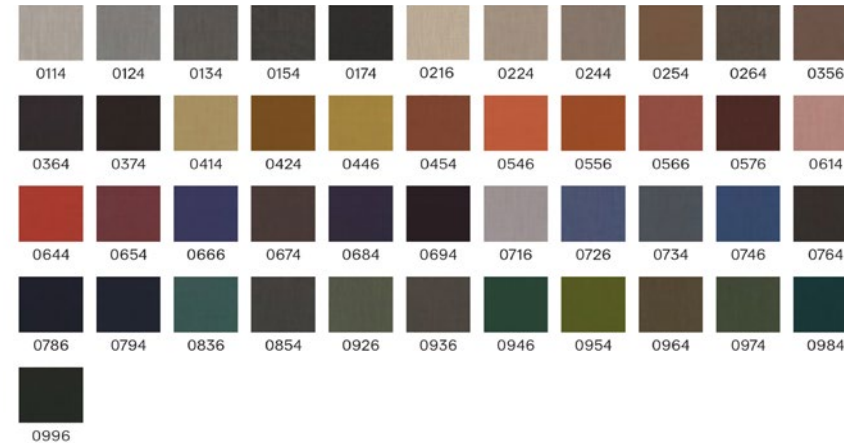
Sustainability: EU Ecolabel, Greenguard Gold, HPD, EPD

Price group: 3

More info:

kvadrat.dk/en/products/upholstery/1221-canvas-2

Northern



Vidar 3

by Kvadrat

Woven from bouclé yarns with a regular loop size, Vidar has a deep, tight, large-grained texture that lends itself particularly well to the graphic use of colour in upholstery. Originally designed by Fanny Aronsen, Vidar has been re-coloured by Raf Simons, with shades ranging from fresh jade green, raspberry pink and iris blue through to brick and earth tones, and easy neutrals.

The gentle satin surface finish of the weave contrasts with the deep shadowy tones in the depths, giving a multifaceted richness to the intense colours in the range.

Design: Fanny Aronsen / Raf Simons

Composition: 94% new wool worsted, 6% nylon

Width: 140 cm

Weight: 765 g/lin.m

Durability: 60,000 Martindale (EN ISO 12947)

Pilling: 4 (EN ISO 12945)

Lightfastness: Note 5-7 (ISO 105-B02)

Warranty: 10 years

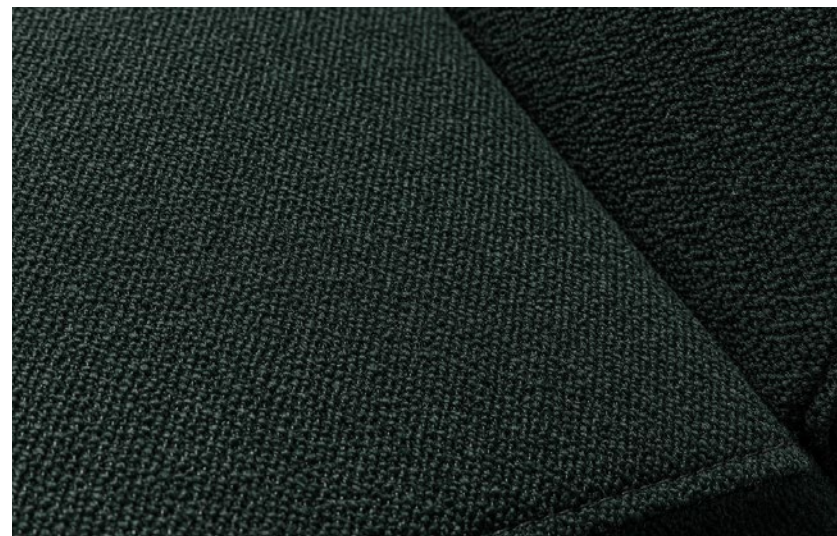
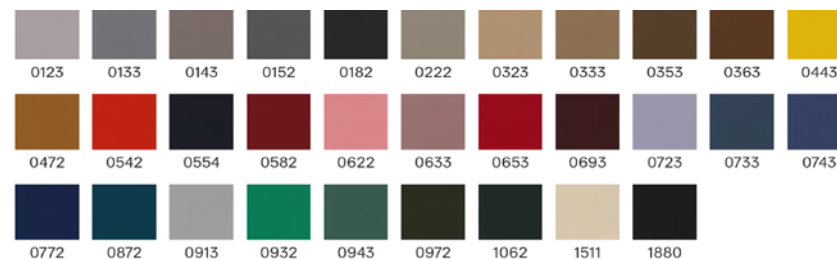
Produced in: Norway

Sustainability: EU Ecolabel, Greenguard Gold, HPD, EPD

Price group: 4

More info:

kvadrat.dk/en/products/upholstery/8484-vidar-3



Moss by Kvadrat

The mixture of twisted yarn and chenille gives the fabric surface a unique structure with an appearance of movement but also creates a soft handle and adds a special dimension to the furniture it covers.

The twenty-two colourways are either one- or two-tone combinations inspired by Vincent van Duysen's own home interior and range from cool cement and soft blue to oily green, curry yellow and the shades of natural wood.

Design: Sahco

Composition: 52% cotton, 22% viscose,
14% Polyacrylic, 6% linen, 3% nylon, 3% polyester

Width: 138 cm

Weight: 918 g/lin.m

Durability: 50,000 Martindale (EN ISO 12947)

Pilling: Note 4-5 (EN ISO 12945)

Lightfastness: Note 5-7 (ISO 105-B02)

Warranty: 2 years

Produced in: Belgium

Sustainability: EPD

Price group: 4

More info:

kvadrat.dk/en/products/upholstery/600664-moss



Zero by Kvadrat

The influence of Parisian couture clothing can be seen in this elegant and irregular bouclé upholstery textile. The pearl effect yarn is used in both warp and weft giving a luxurious handle and a sophisticated appearance. The sixteen colourways range from tonal through to contrasting 'salt and pepper' combinations.

Design: Sahco

Composition: 65% cotton, 20% Polyacrylic,
15% polyester

Yarn type: Stapel / filament

Binding: Jacquard

Width: 140 cm

Weight: 750 g/lin.m

Durability: 70,000 Martindale (EN ISO 12947)

Pilling: Note 5 (EN ISO 12945)

Lightfastness: Note 5-6 (ISO 105-B02)

Warranty: 2 years

Produced in: Belgium

Sustainability: Greenguard Gold, HPD

Price group: 4

More info:

kvadrat.dk/en/products/upholstery/600703-zero

